

# Commode Wheelchair DY2681

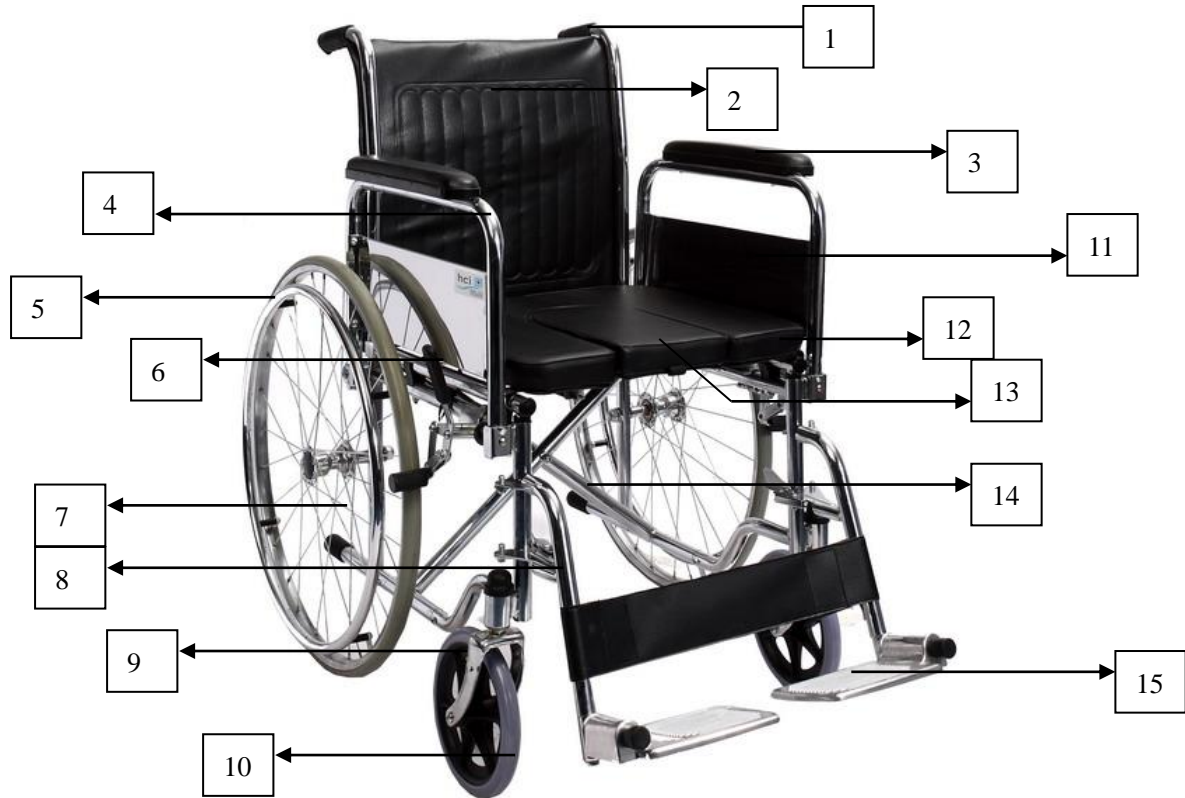


Size(cm) Model													
	(cm)	(cm)	(cm)	(cm)	(cm)	(cm)	(cm)	(cm)	(cm)	(cm)	(kg)	(cm)	NW GW
DY1954LGC	56	27	46	60	20	50	95	106	40	40	100	83*29*92	18/20
												1PC/CTN	

CE

---

# USER'S MANUAL



1. Hand Grip

2. Backrest

3. Armrest pad

4. Flip-Up armrest.

5. Hand rim

6. Brake Lever

7. Rear Mag Wheel

8. Legrest

9. Fork

10. Front Castor

11. Side Panel

12. Soft Foam Seat

13. U Shaped Draw Panel

14. Cross Tube

15. Foot Plate

---

## How to Assemble and Detach the Wheelchair

### 1). Armrest

A. Press the armrest button.



B. Lift up the Armrest with both hands.



### 2). Leg rest (From Left to Right)

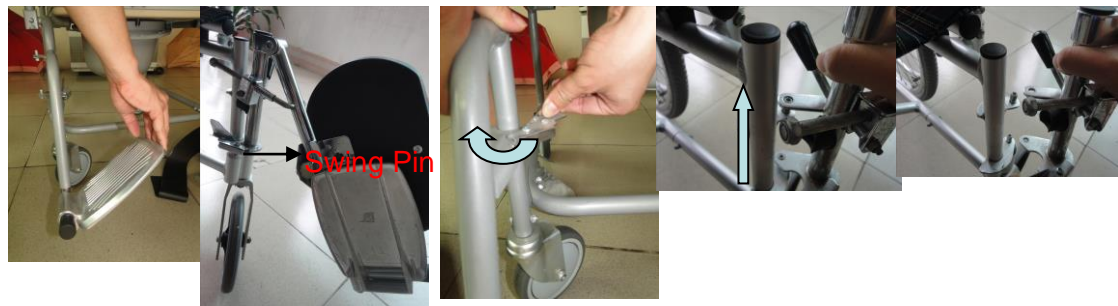
A. Lift up the foot plate;

B: Pull the Swing Pin to the opposite side;

C. Turn the leg rest as the blue arrow indicates;

D. Lift up the leg rest.

E. Done.



---

## How to Lock and Unlock the Wheelchair

It is very important to lock the Wheelchair when simply sitting on it.

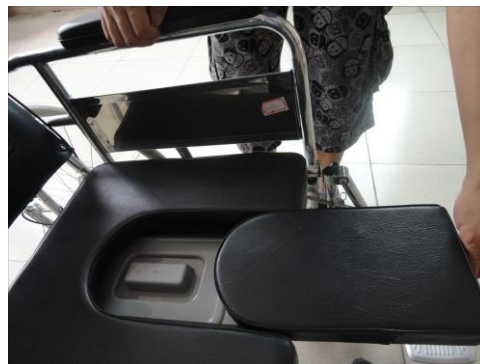
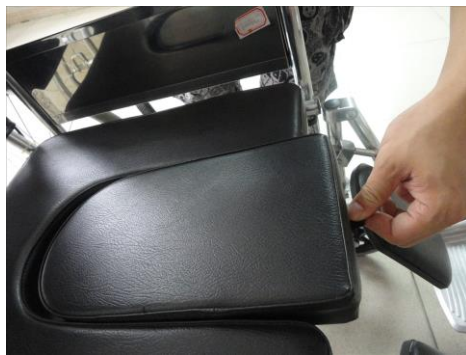
- A. This is how the brake looks like when the wheelchair is unlocked.
- B. Hold the brake lever and move it forwarder, as the arrow indicates.
- C. When you hear a “Snap” , the wheelchair is locked.
- D. This is how the brake looks like when the wheelchair is locked.

**To unlock the wheelchair is operate the other way around.**

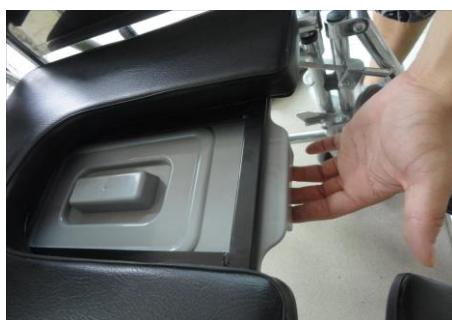


## How to use the commode chair properly

- A. Take out the U Shaped Part from the soft foam seat.



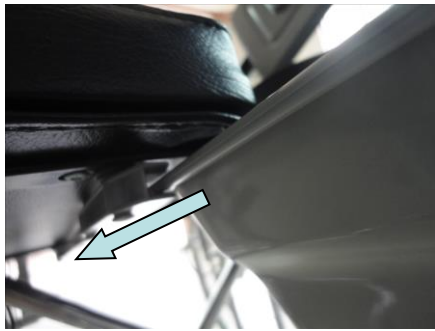
- B. Take out the commode bucket under the seat, and take away the lid.





---

C. After taking away the lid, put back the commode bucket.



D. Done.



## How to fold the Wheelchair

A. A. Take out the commode bucket, commode board and footrest before you fold the commode wheelchair

B. B. Pull up the string on both sides of the seat frame, and the commode chair will fold as you pull.

C. Mind the hole at both sides of the seat frame when you put back the commode board.

