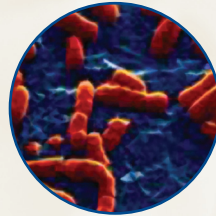


PREMIER™ EHEC

Rapid EIA for the detection of Enterohemorrhagic *E. coli* (EHEC)



Is a 6% detection rate acceptable for a life-threatening illness?

With Premier™ EHEC, you will detect ALL of the life threatening serotypes.

If you are using an O157:H7 culture plate, which only tests for *E. coli* O157:H7, your patients are being exposed to those odds. Scientists have recently identified more than 150 shiga-toxin producing *E. coli*, and the toxin from every one of those serotypes can cause HUS (Hemolytic Uremic Syndrome), resulting in significant injury and even death - particularly with children. Thus, you should be using a test like Meridian's Premier™ EHEC, which utilizes cutting edge technology to identify all of the harmful serotypes to provide the best patient care possible.

ACCURACY COMPARISON EXAMPLE	Culture Plate	Premier EHEC
# of samples containing shiga-toxin producing <i>E. coli</i>	100	100
Incidence of O157:H7	12% ¹	n/a
# of shiga-toxin producing <i>E. coli</i> to ID	12	100
Sensitivity	50% ²	78.9% ³
# of shiga-toxin producing <i>E. coli</i> identified	6	79
# of shiga-toxin producing <i>E. coli</i> missed	94	21

- The superior technology platform with Premier™ EHEC detects 100% of the shiga-toxin producing serotypes
- When using the direct stool procedure, Premier™ EHEC has a sensitivity of 78.9% (with broth enhancement, sensitivity is 100%)
- If you think the *E. coli* incidence in your patient population is low, think again! If you aren't testing for the right bacteria, it will look like the incidence in your population is low
- The CDC now recommends that laboratories should be testing all samples for EHEC⁴



Meridian
Bioscience, Inc.
Inspired Science. Trusted Solutions.™

¹ Paul Granato, M.D., "Enteric Disease Due to Shiga Toxin Producing *E. coli*". *Lab Alliance Lablines Publication*, September/October, 2005.

² Novicki, et al., "Comparison of Sorbitol MacConkey Agar," *Journal of Clinical Microbiology*, February 2000, p. 547-551.

³ Premier™ EHEC Package Insert.

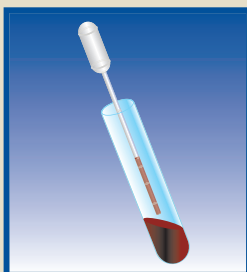
⁴ CDC, Foodborne and Diarrheal Diseases Branch, Shiga-toxin -producing *Escherichia coli*: Data from 2002 and recommendations on reporting, November 12, 2003.

Test Procedure

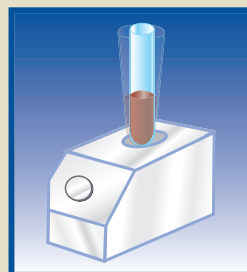
PREMIER™
EHEC



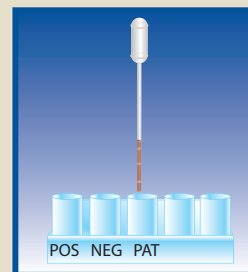
1 Measure 200 µL of Sample Diluent into a test tube.



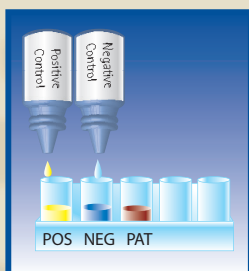
2 Mix specimen thoroughly. Using a transfer pipet, add 50 µL to the tube. Gently expel and withdraw the suspension several times.



3 Vortex for 15 seconds.



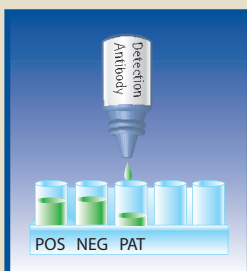
4 Detach microwells needed, place in holder and add 100 µL of diluted specimen to the appropriate well.



5 Add 2 drops of Positive or Negative Control to the appropriate wells. Shake firmly for 30 seconds. Seal the plate and incubate for 1 hour at room temperature.



6 Wash 5 times with 1x Wash Buffer. See package insert for proper wash procedure.



7 Add 2 drops of Detection Antibody to all wells, Seal the plate and incubate for 30 minutes at room temperature.



8 Repeat wash procedure as in Step 6.



9 Add 2 drops of Enzyme Conjugate to all wells. Seal the plate and incubate for 30 minutes at room temperature.



10 Repeat wash procedure as in Step 6.



11 Add 2 drops of Substrate to all wells. Incubate for 10 minutes at room temperature.



12 Add 2 drops of Stop Solution to all wells and shake firmly for 30 seconds.

Interpretation of Results

Visual:

Negative = colorless

Positive = definite yellow color

Spectrophotometric Single Wavelength (450nm)

Negative = OD 450 <0.180

Positive = OD 450 ≥0.180

Spectrophotometric Dual Wavelength (450/630nm)

Negative = OD 450/630 <0.150

Positive = OD 450/630 ≥0.150

*This chart does not contain complete instructions for use. For further information, please refer to the package insert.

Ordering Information

Premier™ EHEC

Test Size

96 Microwells

Meridian#

608096

Cardinal#

B6853-10

Fisher#

23044894

Other Meridian Products

ImmunoCard STAT!® E. coli 0157 Plus

Test Size

30 Test Cards

Meridian#

750530

Cardinal#

B6830-24

Fisher#

14910305



USA/Corporate Office:
3471 River Hills Drive
Cincinnati, Ohio 45244
Telephone: 513.271.3700
Orders/Customer Service: 1.800.543.1980
Technical Support: 1.800.343.3858
Information Fax: 513.272.5432
Ordering Fax: 513.271.0124
www.meridianbioscience.com

Belgium / France / Italy / The Netherlands

©2006 PEHEC001

