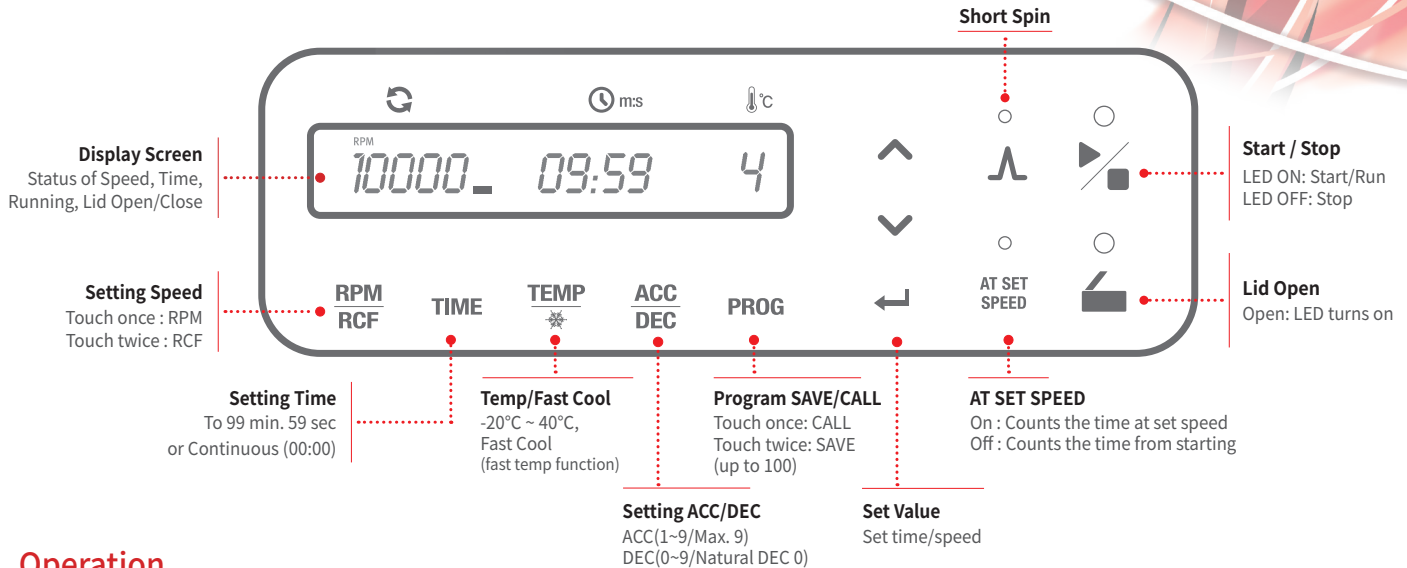
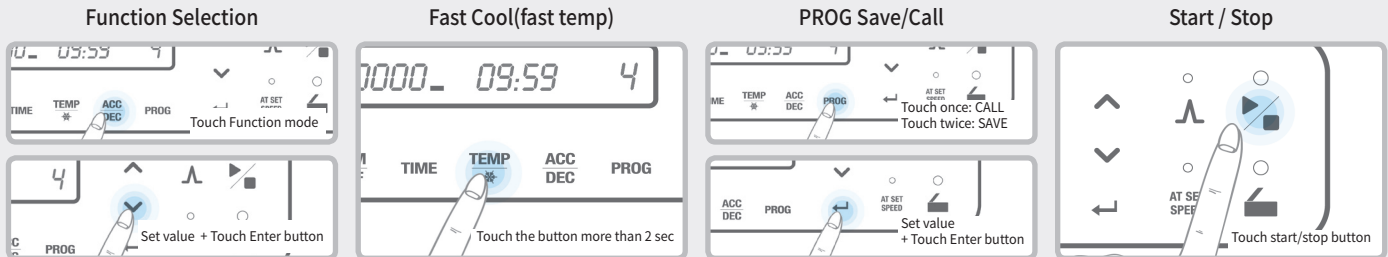


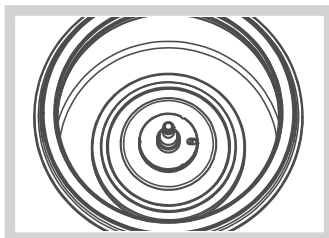
Display & Control Panel Quick Guide



Operation

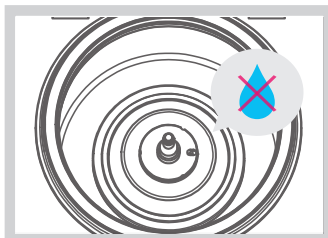


Precaution before Operating the Centrifuge



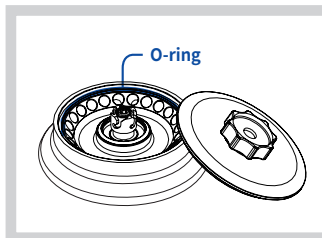
Motor shaft & rotor

Clean the motor shaft.
Remove the foreign substances
not to cause any vibration.



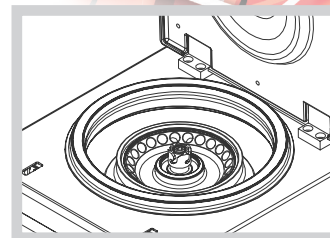
Keep the lid open after every use

Keep the instrument dry after use
for prolonged durability.
Take the rotor out and clean the
shaft with the dry soft cloth.



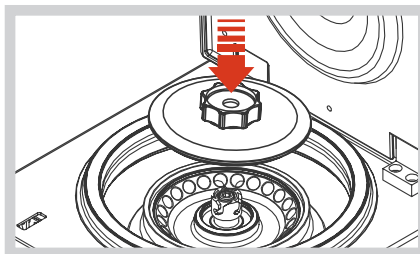
O-ring maintenance

Check the O-ring is put on the right place of
the rotor. Make the rotor lid loose when not
using the centrifuge which is for prolonged
durability of O-ring.



Rotor checking

Check the rotor is installed correctly
and is sitting firmly on the motor shaft.



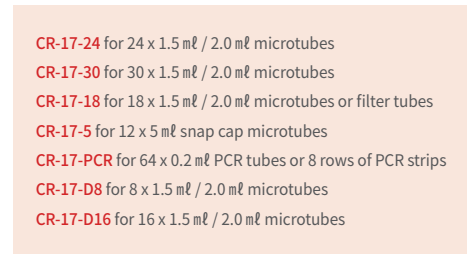
Easy lock lid

One step clicking action is enough to make a closure
of rotor lid.



Buckets or samples balanced

Load the sample tubes symmetrically.



Interchangeable rotors