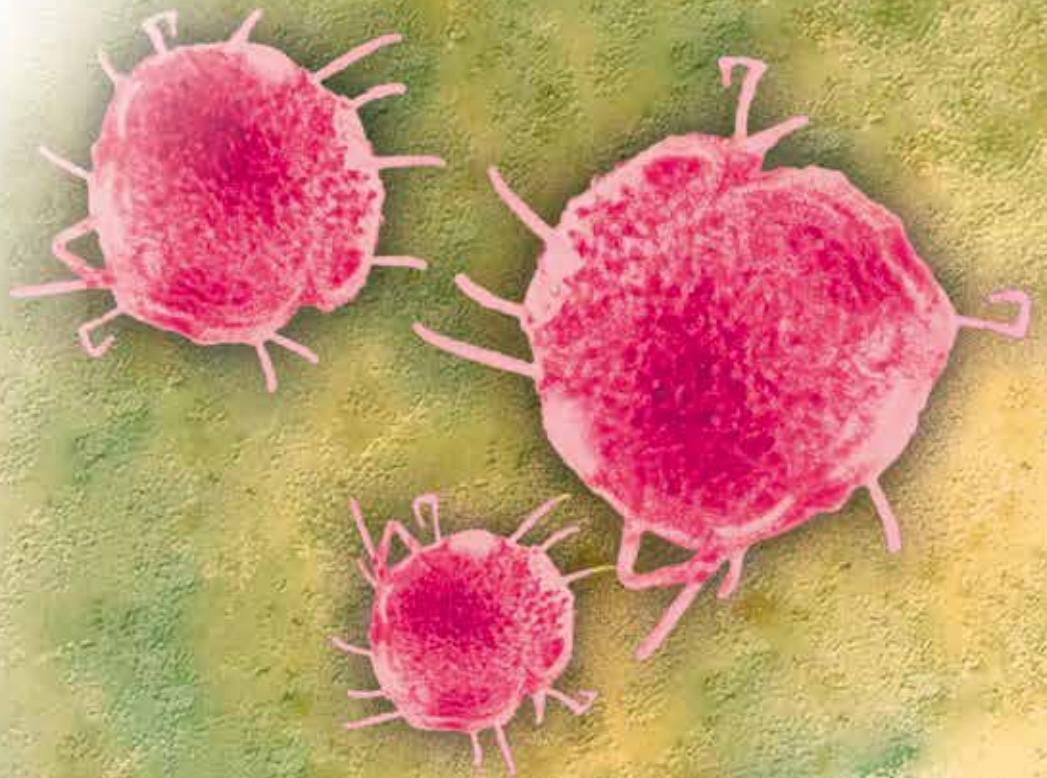


Infectious Disease

LIAISON[®] Measles IgG

The fully automated solution
for quantitative antibody detection



DiaSorin

The Diagnostic Specialist

FOR OUTSIDE THE US AND CANADA ONLY

KEY ASSAY FEATURES

Number of tests	100
Method	Indirect Quantitative
Assay range	5 – 300 AU / mL
Solid Phase	Recombinant nucleoprotein expressed in baculovirus
Conjugate	MoAb to human IgG conjugated to isoluminol derivative
Label	ABEI
Sample	20 µL serum or plasma
Integral on board stability	8 weeks
Calibrators availability	On board – positive and negative
Calibration stability	4 weeks
Controls availability	Positive and negative (60 tests per control kit – code 318811)
Controls stability once opened	8 weeks

Performance Characteristics

- **Reference to WHO Standard:** Cut-off value equates to 175 mIU/mL (WHO Third International Standard for Anti-Measles, NIBSC code: 97/648)
- **Cross-reactions:** Zero cross reactions observed with a panel consisting of antibodies to hCMV, EBV, rubella virus, parvovirus B19, mumps, Toxoplasma, HSV, VZV, HAV, ANA
- **Repeatability Coefficient of Variation:** 4.3-7.5 %
- **Reproducibility Coefficient of Variation:** Site 1: 10.0 - 14.5%
Site 2: 5.0 – 11.2%

Diagnostic performance was assessed by testing 529 unselected specimens collected from a European laboratory routine (300 unselected individuals, 50 children ages 0-8 years, 117 subjects with serology suggestive of susceptibility to infection, 62 patients with serology suggestive of acute infection) against a commercially available reference EIA.

- **Diagnostic specificity:** 97.4% (189/194) (95% confidence interval: 94.1-99.2%)
- **Diagnostic sensitivity:** 94.7% (306/323) (95% confidence interval: 91.7-96.9%)

Ordering Information

LIAISON® Measles IgG (Code 318810)	LIAISON® Control Measles IgG (Code 318811)
LIAISON® Measles IgM (Code 318820)	LIAISON® Control Measles IgM (Code 318821)

AVAILABLE ON **LIAISON®** SYSTEMS

Product availability subject to required regulatory approval